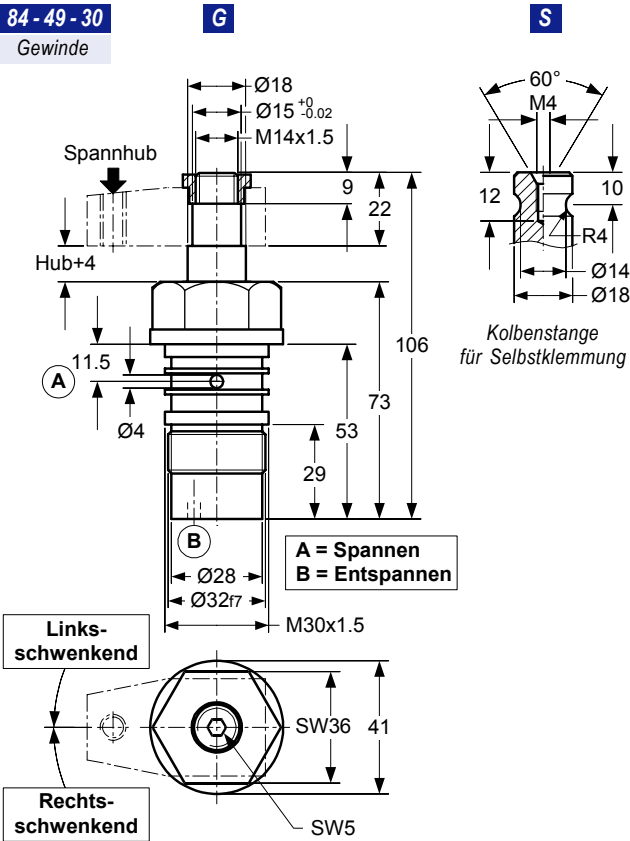


**Massbild**

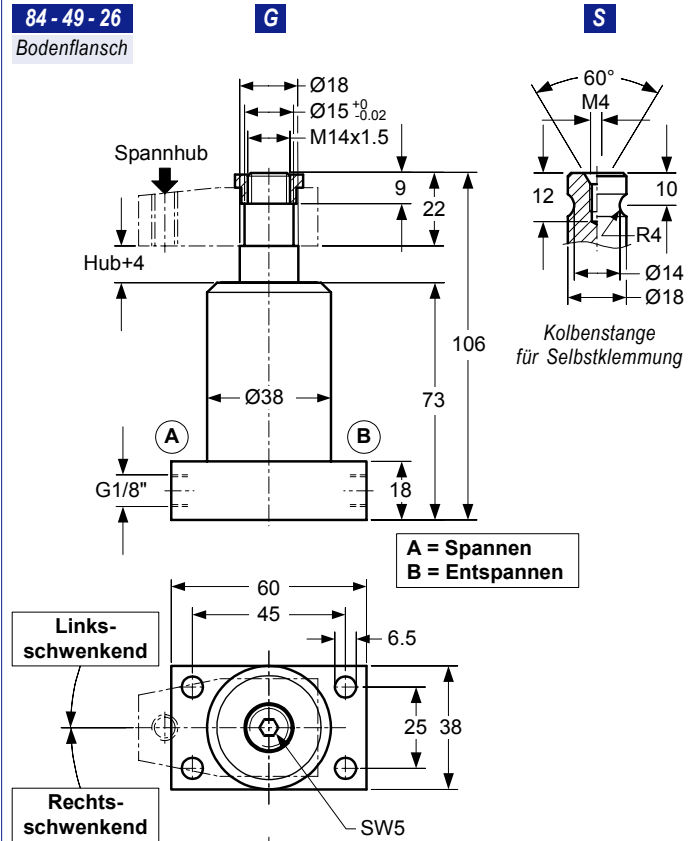
**84 - 49 - 30**

Gewinde



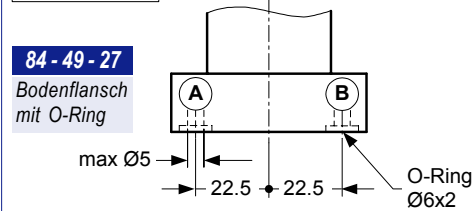
**84 - 49 - 26**

Bodenflansch



**84 - 49 - 27**

Bodenflansch mit O-Ring



**Typenschlüssel**

84 - 49 - 30 - G - 1 - L

**Grundbezeichnung**

siehe Typenauswahl

**Dichtungen**

- L 250 bar / 80 °C
- H 500 bar / 80 °C
- V 500 bar / 120 °C

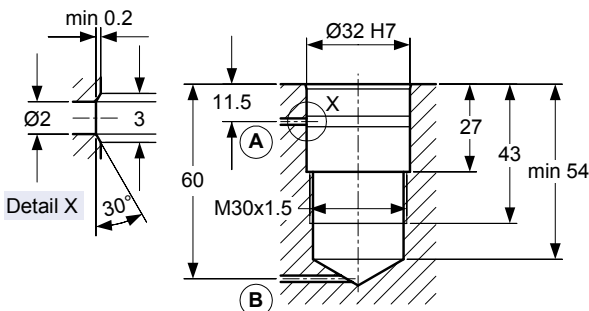
**Kolbenstange**

- G Gewinde
- S Selbstklemmung

**Drehrichtung**

- 0 Rechtsschwenkend
- 1 Linksschwenkend

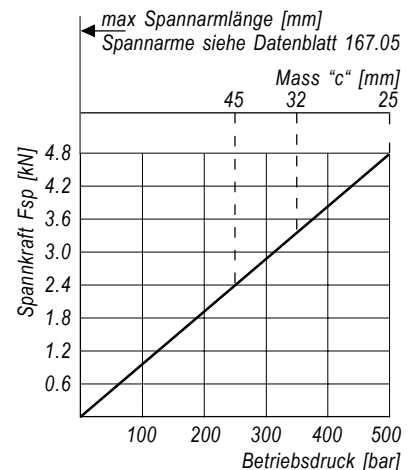
**Aufnahmebohrung**



**Kenndaten**

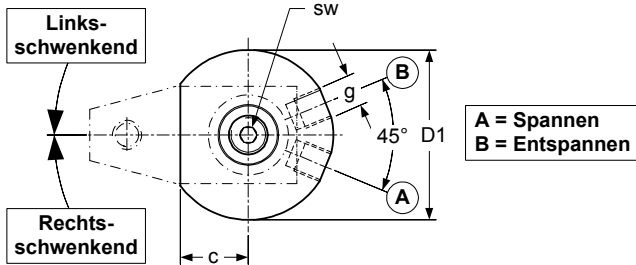
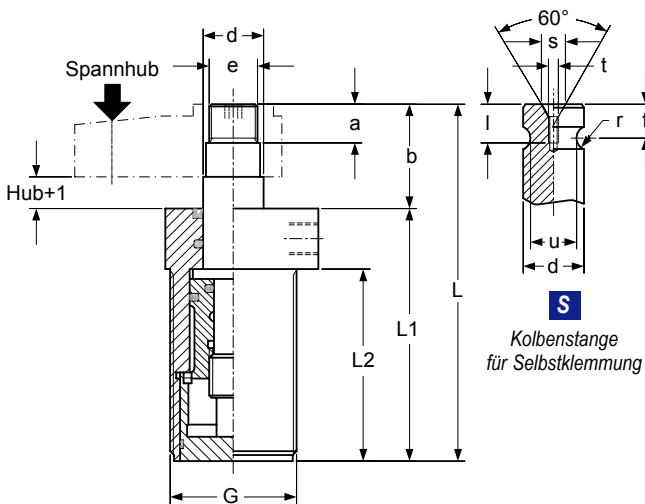
- Hub : 7 mm
- Zul. Volumenstrom : 4 cm³/s
- Ölbedarf Spannhub : 3.8 cm³
- Ölbedarf Rückhub : 3.5 cm³

**Spannkraft-Diagramm**

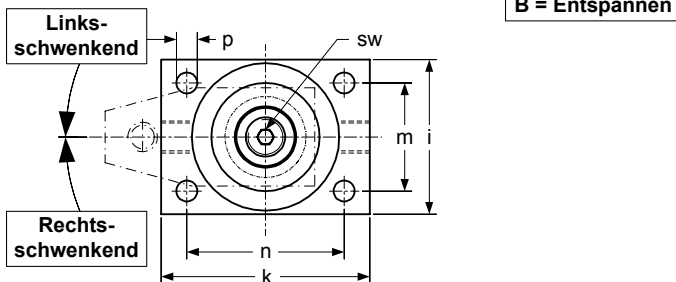
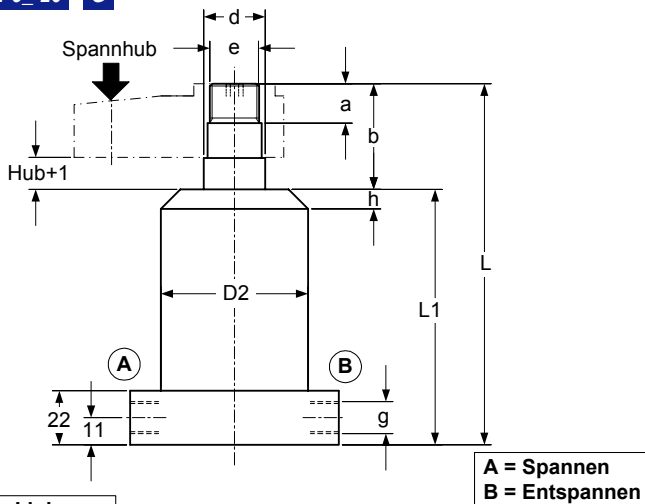


Massbild

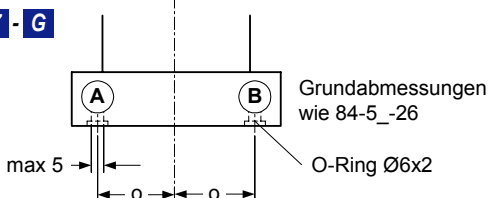
84-5\_-25 - G



84-5\_-26 - G



84-5\_-27 - G



Typenauswahl / Masstabelle

Befestigung	Grundbezeichnung		
	84 - 50 - 25	84 - 51 - 25	84 - 52 - 25
Gewinde	84 - 50 - 25	84 - 51 - 25	84 - 52 - 25
Bodenflansch	84 - 50 - 26	84 - 51 - 26	84 - 52 - 26
Bodenflansch und O-Ring	84 - 50 - 27	84 - 51 - 27	84 - 52 - 27
d	18	25	42
Hub	8	12	12
Zul. Volumenstrom [cm³/s]	7	12	25
Ölbedarf Hub [cm³]	5.1	14.8	38
Ölbedarf Rückhub [cm³]	4.85	18	52
D1	55	70	113
D2	45	60	90
L	116	147	202
L1	85	104	147
L2	65	79	117
a	13	16	20
b	31	43	55
c	20	28	43
e (M.)	12 x 1.5	16 x 1.5	30 x 1.5
f	10	14	20.5
G (M.)	36 x 1.5	52 x 1.5	80 x 2
h	6	8	12
i	45	63	90
k	65	85	115
l	12	16	18
m	30	44	68
n	50	65	90
o	24	32	48
p	6.5	8.5	15
r	4	5	8
s	8	10	13
t (M.)	4	4	6
u	14	19	32
SW	5	6	12
g (G.)	1/8"	1/4"	1/4"

Typenschlüssel

84 - 50 - 25 - G - 1 - L

Dichtungen

- L 250 bar / 80 °C
- H 500 bar / 80 °C
- V 500 bar / 120 °C

Drehrichtung

- 0 Rechtsschwenkend
- 1 Linksschwenkend

Kolbenstange

- G Gewinde
- S Selbstklemmung

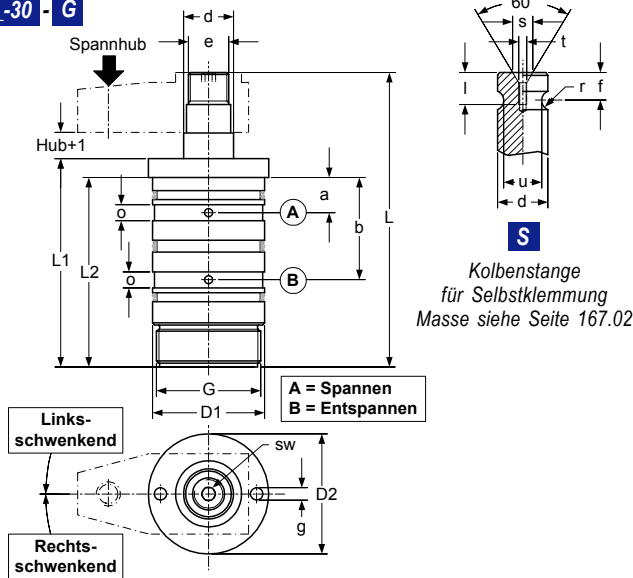
Grundbezeichnung

siehe Typenauswahl

**Massbild**

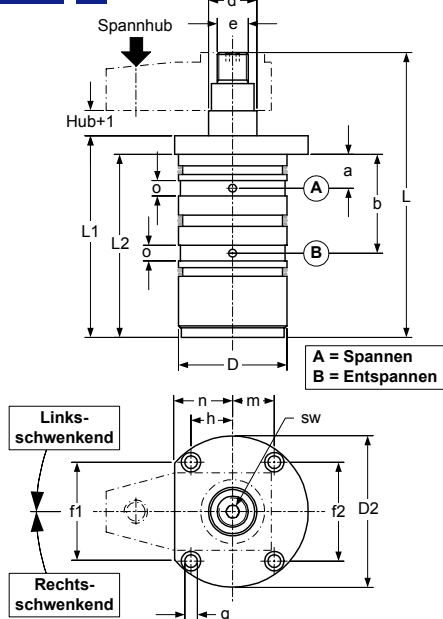
**Einschraub-Version**

84-5 -30 - G



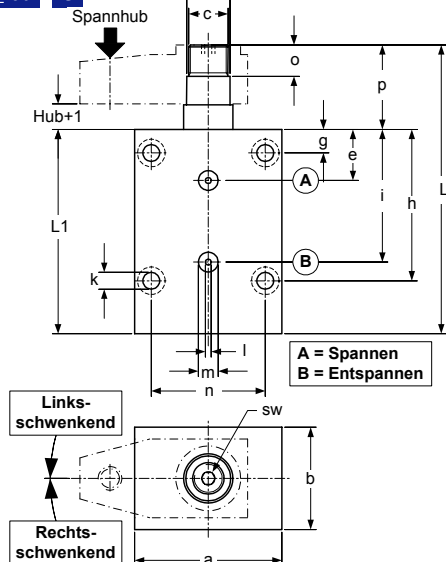
**Einbau-Version**

84-5 -40 - G



**Block-Version**

84-5 -50 - G



**Typenauswahl / Masstabelle**

Grundbezeichnung	84 - 50 - 30	84 - 51 - 30	84 - 52 - 30
d	18	25	42
Hub	8	12	12
Zul. Volumenstrom [cm³/s]	7	12	25
Ölbedarf Hub [cm³]	5.1	14.8	38
Ölbedarf Rückhub [cm³]	4.85	18	52
D1 f7	40	56	85
D2	44	60	90
G [M..]	36 x 1.5	52 x 1.5	80 x 2
L	116	147	202
L1	85	104	147
L2	76.5	94.5	132
a	15	17.5	28
b	42	51	69
c	18	21	28
e [M..]	12 x 1.5	16 x 1.5	30 x 1.5
g	4.1	6.1	8.2
o	8	8	10
sw	5	6	12

Grundbezeichnung	84 - 50 - 40	84 - 51 - 40	84 - 52 - 40
d	18	25	42
Hub	8	12	12
Zul. Volumenstrom [cm³/s]	7	12	25
Ölbedarf Hub [cm³]	5.1	14.8	38
Ölbedarf Rückhub [cm³]	4.85	18	52
D f7	40	56	85
D2	64	78	124
L	116	147	202
L1	85	104	147
L2	76.5	94.5	132
a	15	17.5	28
b	42	51	69
e (M..)	12 x 1.5	16 x 1.5	30 x 1.5
g	5.5	6.5	10.5
h	11.5	21.5	30
f1	45	51	86
f2	40	51	86
m	17	21.5	30
n	22	30	45
o	8	8	10
sw	5	6	12

Grundbezeichnung	84 - 50 - 50	84 - 51 - 50
d	18	25
Hub	8	12
Zul. Volumenstrom [cm³/s]	7	12
Ölbedarf Hub [cm³]	5.1	14.8
Ölbedarf Rückhub [cm³]	4.85	18
L	116	147
L1	85	104
a	60	75
b	36	52
c (M..)	12 x 1.5	16 x 1.5
e	20.5	26
g	10	12
h	67	77
i	56.5	67.5
k	6.5	8.5
l	2.5	3
m	10	10
n	45	58
o	13	16
p	31	43
sw	5	6

### Typenschlüssel

84 - 50 - 40 - G - 1 - L

#### Grundbezeichnung

siehe Typenauswahl

#### Kolbenstange

**G** Gewinde  
**S** Selbstklemmung

#### Drehrichtung

**0** Rechtsschwenkend  
**1** Linksschwenkend

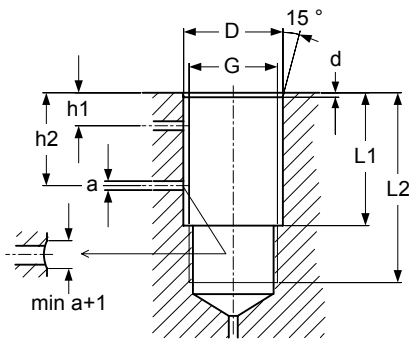
#### Dichtungen

**L** 250 bar / 80 °C  
**H** 500 bar / 80 °C  
**V** 500 bar / 120 °C

### Typenauswahl / Masstabelle

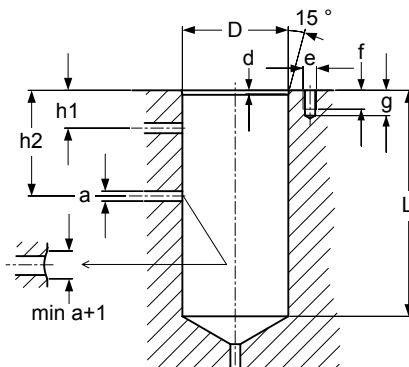
siehe Datenblatt 167.02

### Aufnahmebohrung Einschraubversion



Zylinder-Typ	84 - 50 - 30	84 - 51 - 30	84 - 52 - 30
D H7	40	56	85
G (M.)	36 x 1.5	52 x 1.5	80 x 2
L1 +1	59	74	105
L2 min	78	96	134
a	4	5	6
d	1.5	1.5	2
h1	15	17.5	28
h2	42	51	69

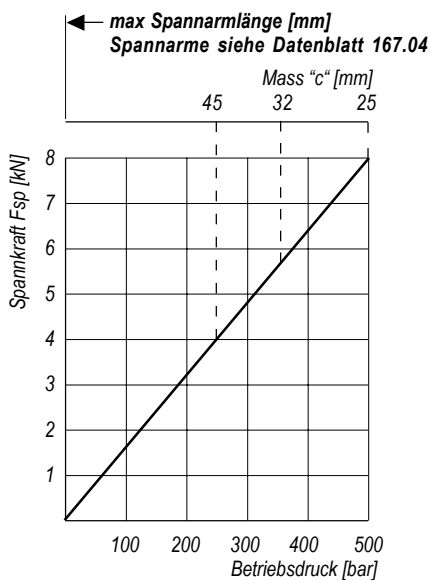
### Aufnahmebohrung Einbauversion



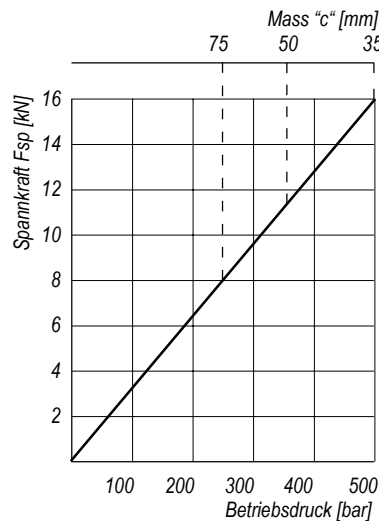
Zylinder-Typ	84 - 50 - 40	84 - 51 - 40	84 - 52 - 40
D H7	40	56	85
L min	78	96	134
a	4	5	6
d	1.5	1.5	2
e (M.)	5	6	10
f	8	10	15
g	10	12	18
h1	15	17.5	28
h2	42	51	69

### Spannkraft - Diagramme

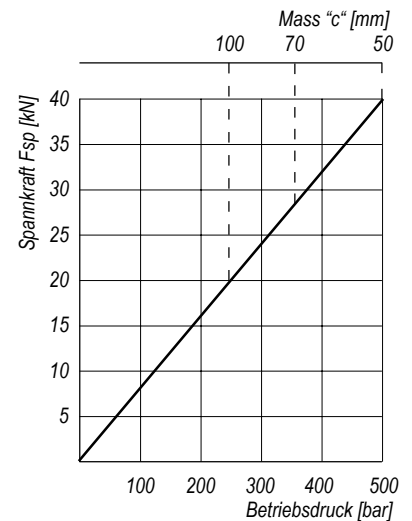
84-50



84-51



84-52

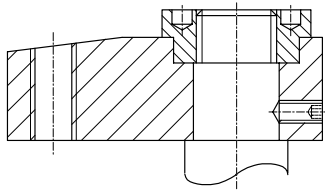


**Bauformen**
**Spannarmermutter**

85 - - 0

85 - - 2

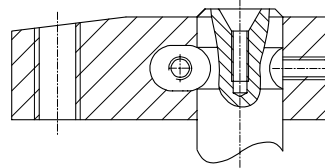
85 - - 4


**Selbstklemmung**

85 - - 1

85 - - 3

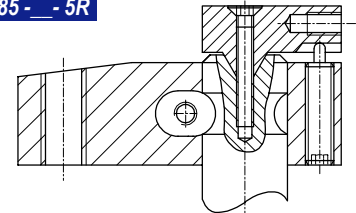
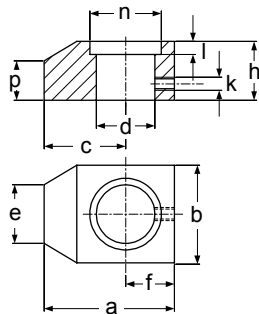
85 - - 5


**Selbstklemmung mit Rutschkupplung**

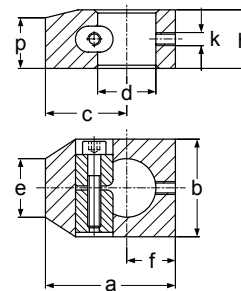
85 - - 1R

85 - - 3R

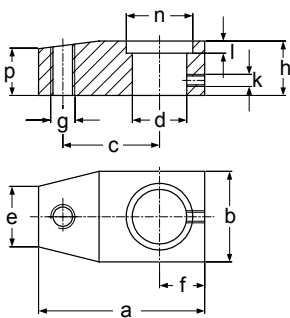
85 - - 5R


**Typenauswahl / Masstabellen**

**für Schwenkspannzylinder**

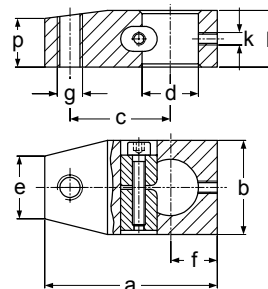
Typ	84-49	84-51	84-52
	84-50	85-51-0	85-52-0
a	40	55	85
b	30	40	70
c	25	35	50
d H7	15	22	39
e	18	23	36
f	15	20	35
h	18	25	37
k (M..)	4	6	8
l	4.5	7	10
n H7	22	28	50
p	12	16.5	20


**für Schwenkspannzylinder**

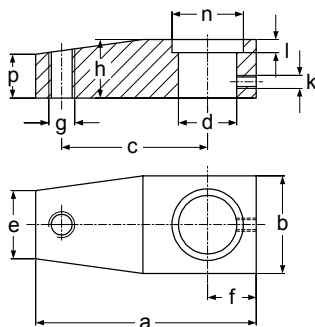
Typ	84-49	84-51	84-52
	85-50-1R	85-51-1R	85-52-1R
a	40	55	85
b	30	40	70
c	25	35	50
d H7	18	25	42
e	18	23	36
f	15	20	35
h	18	25	37
k (M..)	4	6	8
p	12	16.5	20


**für Schwenkspannzylinder**

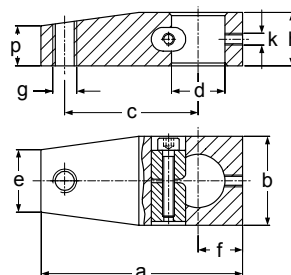
Typ	84-49	84-51	84-52
	85-50-2	85-51-2	85-52-2
a	55	85	125
b	30	40	70
c	32	50	70
d H7	15	22	39
e	20	21	43
f	15	20	35
g (M..)	8	12	20
h	18	25	37
k (M..)	4	6	8
l	4.5	7	10
n H7	22	28	50
p	15.5	21.5	30.5


**für Schwenkspannzylinder**

Typ	84-49	84-51	84-52
	85-50-3R	85-51-3R	85-52-3R
a	55	85	125
b	30	40	70
c	32	50	70
d H7	18	25	42
e	20	21	43
f	15	20	35
g (M..)	8	12	20
h	18	25	37
k (M..)	4	6	8
p	15.5	21.5	30.5


**für Schwenkspannzylinder**

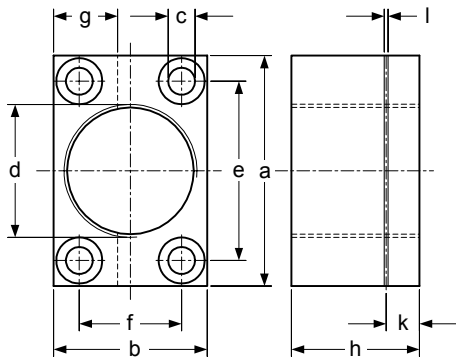
Typ	84-49	84-51	84-52
	85-50-4	85-51-4	85-52-4
a	68	110	155
b	30	40	70
c	45	75	100
d H7	15	22	39
e	21	24	50
f	15	20	35
g (M..)	8	12	20
h	18	25	37
k (M..)	4	6	8
l	4.5	7	10
n H7	22	28	50
p	13.5	17	27


**für Schwenkspannzylinder**

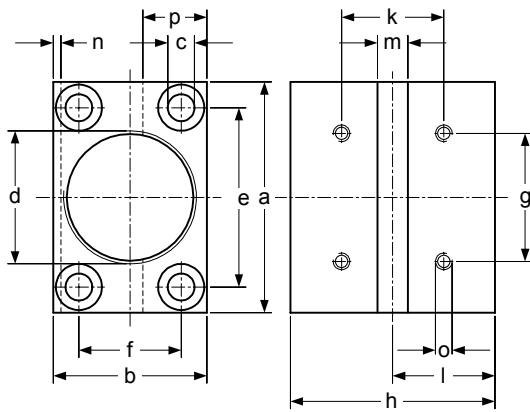
Typ	84-49	84-51	84-52
	85-50-5R	85-51-5R	85-52-5R
a	68	110	155
b	30	40	70
c	45	75	100
d H7	18	25	42
e	21	24	50
f	15	20	35
g (M..)	8	12	20
h	18	25	37
k (M..)	4	6	8
p	13.5	17	27

**Befestigungssockel**

**Typenauswahl / Masstabelle**



Typ	für Schwenkspannzylinder		
	84-50	84-51	84-52
	85 - 00 - 10 - 0	85 - 01 - 11 - 0	85 - 02 - 12 - 0
a	70	90	150
b	42	60	95
c	8.5	10.5	14.5
d (M.)	36 x 1.5	52 x 1.5	80 x 2
e	50	70	120
f	25	40	70
g	15	25	35
h	40	50	70
k	11	13	18
l	1.5	1.5	2.5



Typ	für Schwenkspannzylinder		
	84-50	84-51	84-52
	85 - 00 - 10 - 2	85 - 01 - 11 - 2	85 - 02 - 12 - 2
a	70	90	150
b	42	60	95
c	8.5	10.5	14.5
d (M.)	36 x 1.5	52 x 1.5	80 x 2
e	50	70	120
f	25	40	70
g	34	50	90
h	50	80	120
k	25	40	70
l	25	40	60
m H7	10	12	14
n	3	3	5
o (M.)	5 / 8	6 / 10	8 / 15
p	15	25	35